

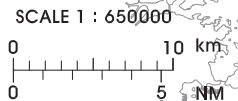
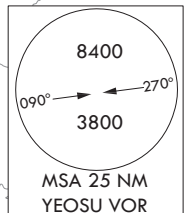
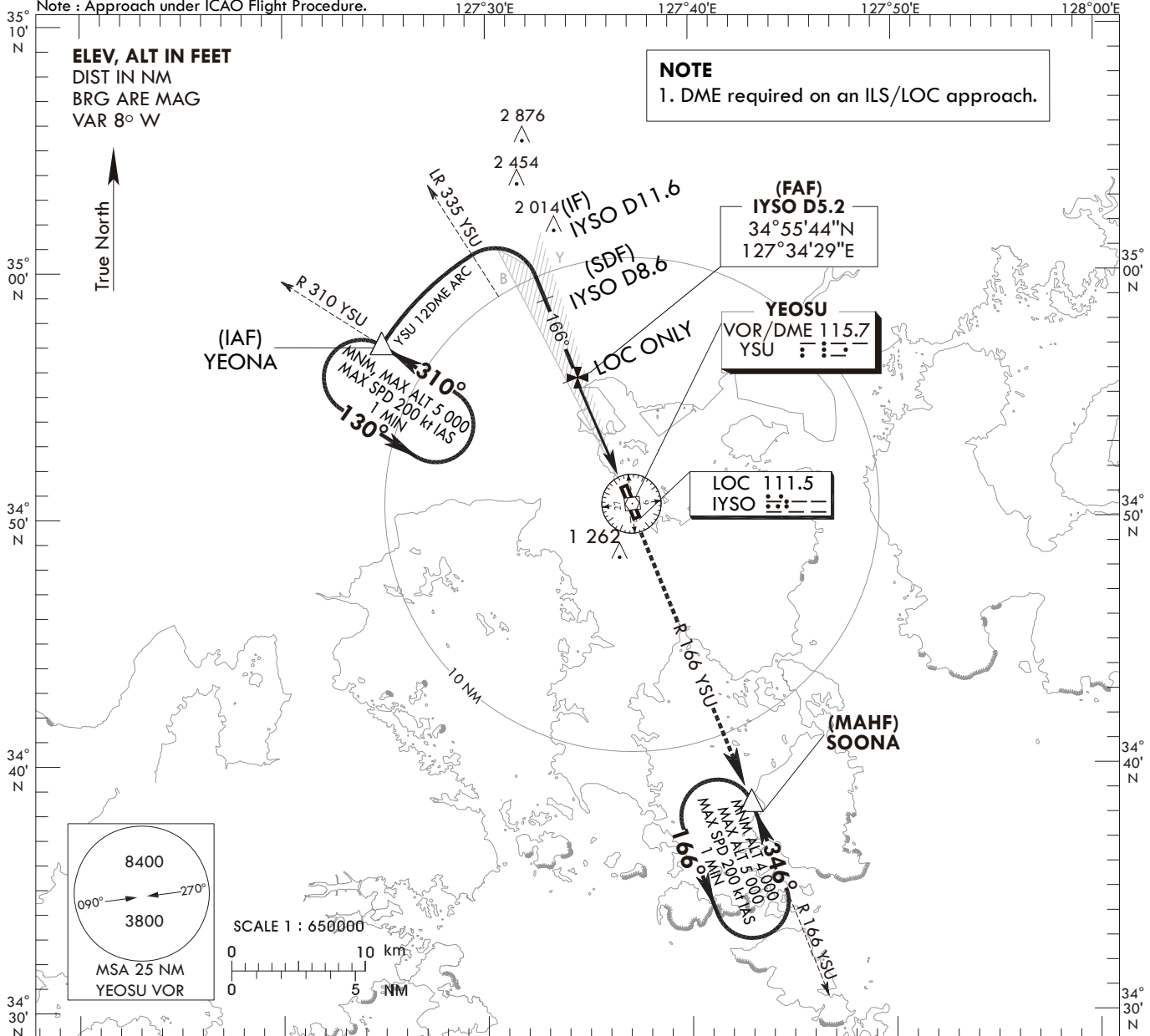
**INSTRUMENT APPROACH CHART - ICAO**

**AERODROME ELEV 53 ft**  
HEIGHTS RELATED TO  
THR RWY 17-ELEV 28 ft

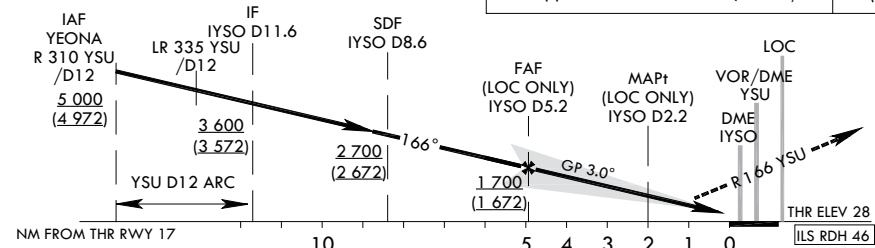
SACHEON APP 135.4  
YEOSU TWR 122.5  
240.9

**YEOSU/Yeosu (RKJY)**  
**ILS or LOC Y RWY 17**

Note : Approach under ICAO Flight Procedure.



RECOMMENDED PROFILE(LOC ONLY)		DME IYSO	5	4	3	2.1
Final Approach Gradient 5.31%, 323 ft/NM		ALT(HGT)	1 644 (1 616)	1 321 (1 293)	998 (970)	740 (712)



TRANSITION ALT 14 000  
TRANSITION LVL FL 140

CATEGORY	DA(DH)/MDA(MDH)	A	B	C	D	MISSED APPROACH							
						Climb to R 166 YSU to SOONA and Hold at 4 000 ft							
STA	CAT-1 (CG 2.5%)	FULL	351 (323)	1 000 m			Rate of descent	Knots	60	90	120	150	180
		ALS INOP	(323)	1 700 m									
	CAT-1 (CG 5.0%)	FULL	228 (200)	RVR 550 m VIS 800m			V/V fpm	318	478	637	796	955	
		ALS INOP	(200)	1 200 m									
LOC (CG 2.5%)	FULL	910 (882)	3 300 m			* Timing Not authorized for defining MAPt. * Circling Not authorized.							
	ALS INOP	(882)	4 000 m										
LOC (CG 5.0%)	FULL	740 (712)	3 200 m										
	ALS INOP	(712)	3 900 m										

Change : Amended ILS plan view symbol.

YEOSU/Yeosu (RKJY)  
 ILS or LOC Y RWY 17

AERONAUTICAL DATA TABULATION

ILS/LOC Approach to RWY 17 from YEONA			
Fix/point		Coordinates	
YEONA(IAF)	R 310 YSU /12.00 NM YSU	34°57'03.8"N	127°24'52.1"E
D11.6 IYSO (IF)	BRG 165.50°/11.60 NM IYSO	35°01'41.4"N	127°31'33.6"E
D8.6 IYSO (SDF)	BRG 165.51°/8.60 NM IYSO	34°58'54.5"N	127°32'55.7"E
D5.2 IYSO (FAP)	BRG 165.52°/5.17 NM IYSO	34°55'44.1"N	127°34'29.3"E
D2.2 IYSO (MAPt LOC ONLY)	BRG 165.52°/2.20 NM IYSO	34°52' 58.5"N	127°35' 50.6"E
THR RWY 17		34°51'03.73"N	127°36'46.77"E
IYSO DME		34°50'57.3"N	127°36'54.6"E
YSU VOR/DME		34°50'34.2"N	127°37'08.2"E
IYSO LOC		34°49'52.0"N	127°37'21.9"E
SOONA	BRG 165.96°/13.00 NM YSU	34°38'27.5"N	127°42'56.0"E

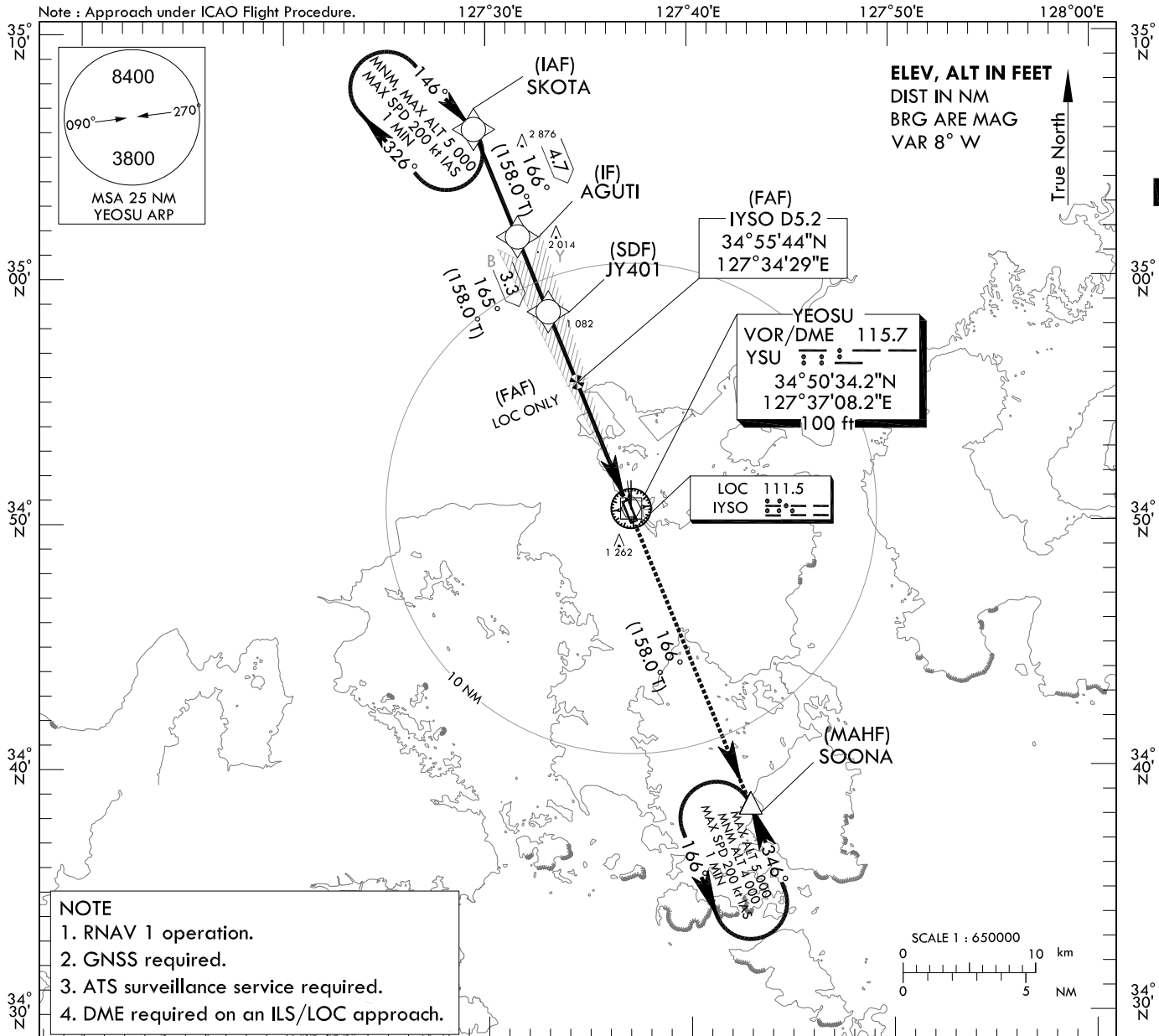
**INSTRUMENT APPROACH CHART - ICAO**

**AERODROME ELEV 53 ft**  
HEIGHTS REALTED TO  
THR RWY 17 - ELEV 28 ft

SACHEON APP 135.4  
YEOSU TWR 122.5  
240.9

**YEOSU/Yeosu (WKJY)**  
ILS or LOC Z RWY 17

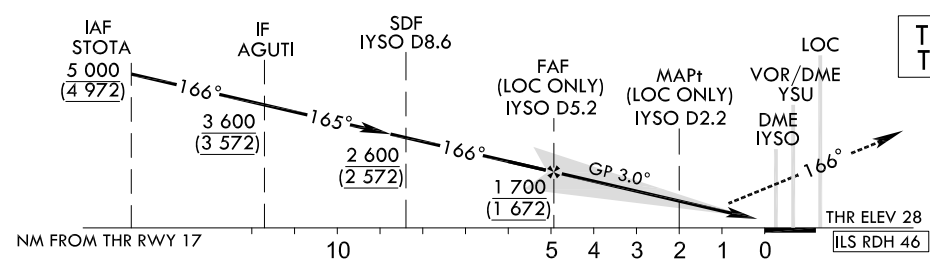
Note : Approach under ICAO Flight Procedure.



**NOTE**  
1. RNAV 1 operation.  
2. GNSS required.  
3. ATS surveillance service required.  
4. DME required on an ILS/LOC approach.

RECOMMENDED PROFILE(LOC ONLY)	DME IYISO	5	4	3	2.1
Final Approach Gradient 5.31%, 323 ft/NM	ALT(HGT)	1 644 (1 616)	1 321 (1 293)	998 (970)	740 (712)

**MISSED APPROACH**  
Climb to 4 000 ft on track of 166° to SOONA.



CATEGORY	DA(DH)/MDA(MDH)	A				B				C				D			
		FULL		ALS INOP		FULL		ALS INOP		FULL		ALS INOP		FULL		ALS INOP	
STA	CAT-1 (CG 2.5%)	FULL	351	1 000 m				RVR 550 m, VIS 800 m				Rate of descent					
		ALS INOP	(323)	1 700 m				V/V fpm									
	CAT-1 (CG 5.0%)	FULL	228	1 200 m				318	478	637	796	955					
		ALS INOP	(200)	3 300 m				* Timing Not authorized for defining MAPt.									
	LOC (CG 2.5%)	FULL	910	4 000 m				* Circling Not authorized.									
		ALS INOP	(882)	3 200 m													
	LOC (CG 5.0%)	FULL	740	3 900 m													
		ALS INOP	(712)														

Change : Information of fix name(BARCO → AGUTI).

YEOSU/Yeosu (RKJY)  
 ILS or LOC Z RWY 17

AERONAUTICAL DATA TABULATION

ILS/LOC Z Approach to RWY 17 from YEONA	
Fix/point	Coordinates
SKOTA (IAF)	35°06'04.9"N 127°29'24.2"E
AGUTI (IF)	35°01'41.4"N 127°31'33.6"E
JY401 (SDF)	34°58'37.8"N 127°33'04.0"E
D5.2 IYSO (FAP) BRG 165.52°/5.17 NM IYSO	34°55'44.1"N 127°34'29.3"E
D2.2 IYSO (MAP† LOC ONLY) BRG 165.52°/2.20 NM IYSO	34°52' 58.5"N 127°35' 50.6"E
THR RWY 17	34°51'03.73"N 127°36'46.77"E
IYSO DME	34°50'57.3"N 127°36'54.6"E
YSU VOR/DME	34°50'34.2"N 127°37'08.2"E
IYSO LOC	34°49'52.0"N 127°37'21.9"E
SOONA	34°38'27.5"N 127°42'56.0"E

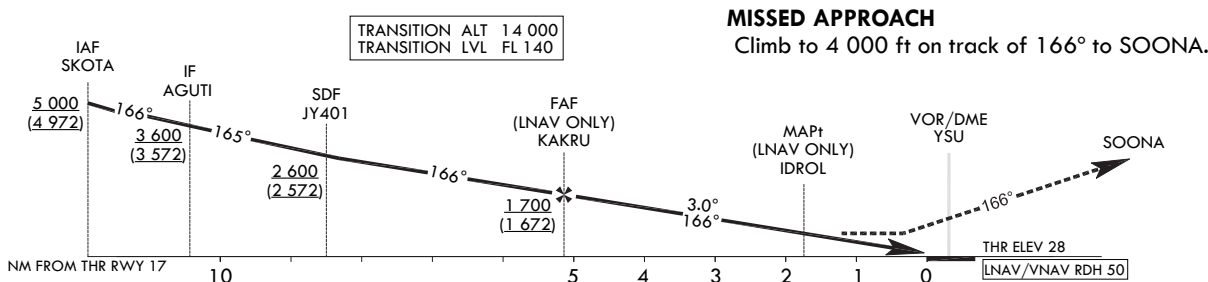
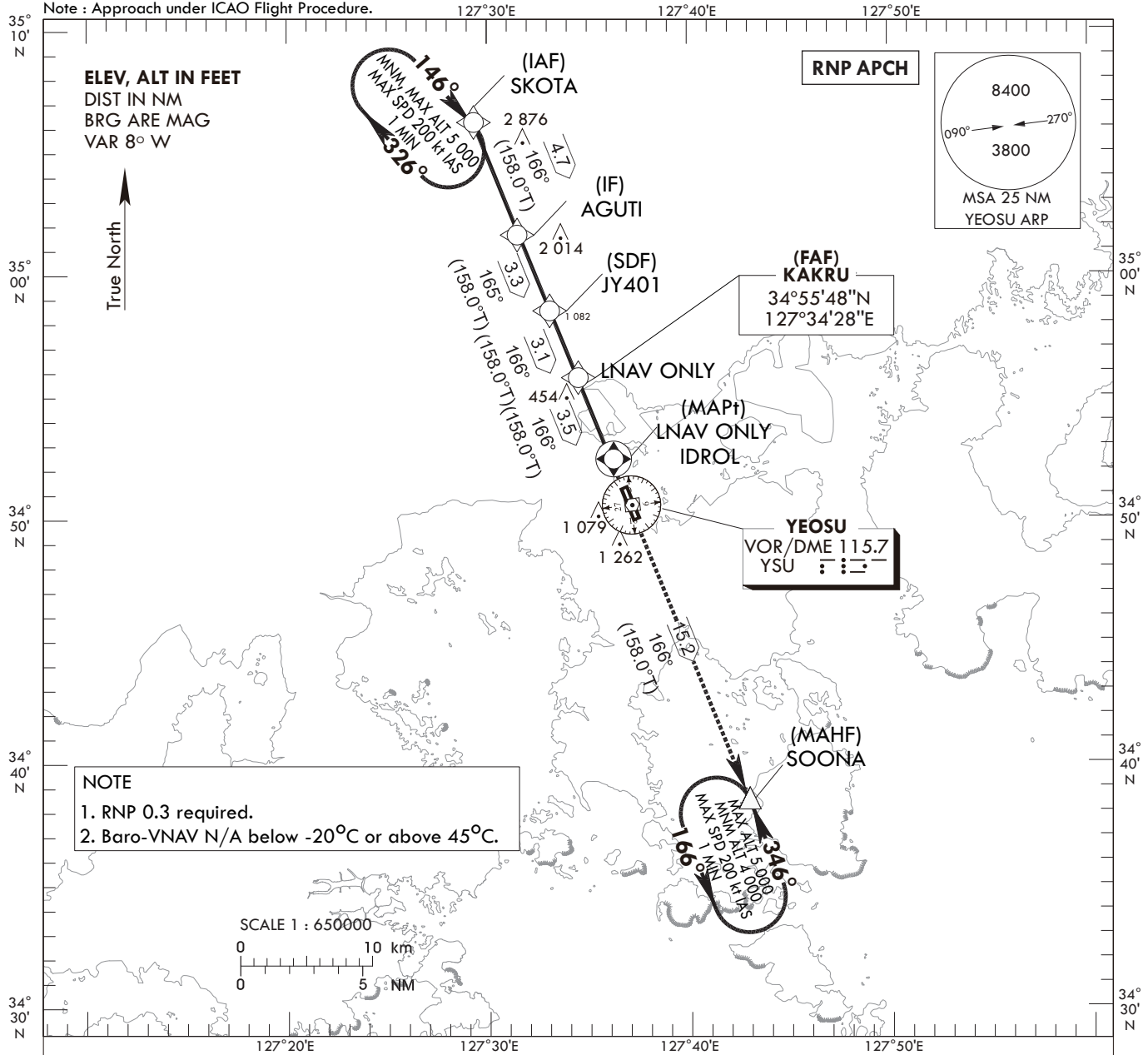
Change : Information of fix name(BARCO →AGUTI).

**INSTRUMENT APPROACH CHART - ICAO**  
**AERODROME ELEV 53 ft**  
**HEIGHTS RELATED TO THR RWY 17-ELEV 28 ft**

SACHEON APP 135.4  
 YEOSU TWR 122.5  
 240.9

**YEOSU/Yeosu (RKJY)**  
**RNP RWY 17**

Note : Approach under ICAO Flight Procedure.



CATEGORY	DA(DH)/MDA(MDH)	A	B	C	D	Knots							
						60	90	120	150	180			
STA	LNAV/VNAV	FULL	910	3 300 m			Rate of descent	V/V fpm	319	478	637	796	956
		ALS INOP	(882)	4 000 m									
	LNAV	FULL	1 040	4 100 m			* Timing Not authorized for defining MAPt.						
		ALS INOP	(1 012)	4 900 m			* Circling Not authorized.						

Change : Information of fix names(BARCO → AGUTI, JEGOL → KAKRU, HEMIL → IDROL).

YEOSU/Yeosu (RKJY)  
RNP RWY 17  
HOLDING PROCEDURE

AERONAUTICAL DATA TABULATION

Instrument Approach Procedure Coding Tables

RNP RWY 17

Serial Number	Path Descriptor	Waypoint Identifier	Fly-over	Course/Track °M(°T)	Distance (NM)	Turn direction	Altitude (ft)	Speed (kt)	Coordinates	VPA/RDH	Navigation specification	Remarks
001	IF	SKOTA	-	-	-	-	+5 000	-	35°06'04.9"N 127°29'24.2"E	-	RNP APCH	IAF
002	TF	AGUTI	-	166(158.0)	4.7	-	+3 600	-	35°01'41.4"N 127°31'33.6"E	-	RNP APCH	IF
003	TF	JY401	-	165(158.0)	3.3	-	+2 600	-	34°58'37.8"N 127°33'04.0"E	-	RNP APCH	SDF
004	TF	KAKRU	-	166(158.0)	3.1	-	+1 700	-	34°55'47.5"N 127°34'27.6"E	-	RNP APCH	FAF
005	TF	IDROL	Y	166(158.0)	3.5	-	+1 040	-	34°52'32.9"N 127°36'03.1"E	-3.00/50	RNP APCH	MAPt
006	TF	SOONA	Y	166(158.0)	15.2	-	-	-	34°38'27.5"N 127°42'56.0"E	-	RNP APCH	-
007	HM	SOONA	Y	346(338.5)	-	L	-4 000 +5 000	-200	34°38'27.5"N 127°42'56.0"E	-	RNP APCH	1 min (Outbound timing)

HOLDING PROCEDURE

Holding Identification	Path Descriptor	Waypoint Identifier	Fly-over	Course/Track °M(°T)	Time (min)	Turn direction	Altitude (ft)	Speed (kt)	Coordinates	VPA/RDH	Navigation specification	Remarks
RNP RWY 17	HM	SKOTA	Y	146(138.0)	1	R	@5 000	-200	35°06'04.9"N 127°29'24.2"E	-	RNAV 1	-

Change : Information of fix names(BARCO → AGUTI, JEGOL → KAKRU, HEMIL → IDROL).

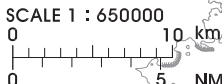
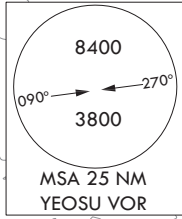
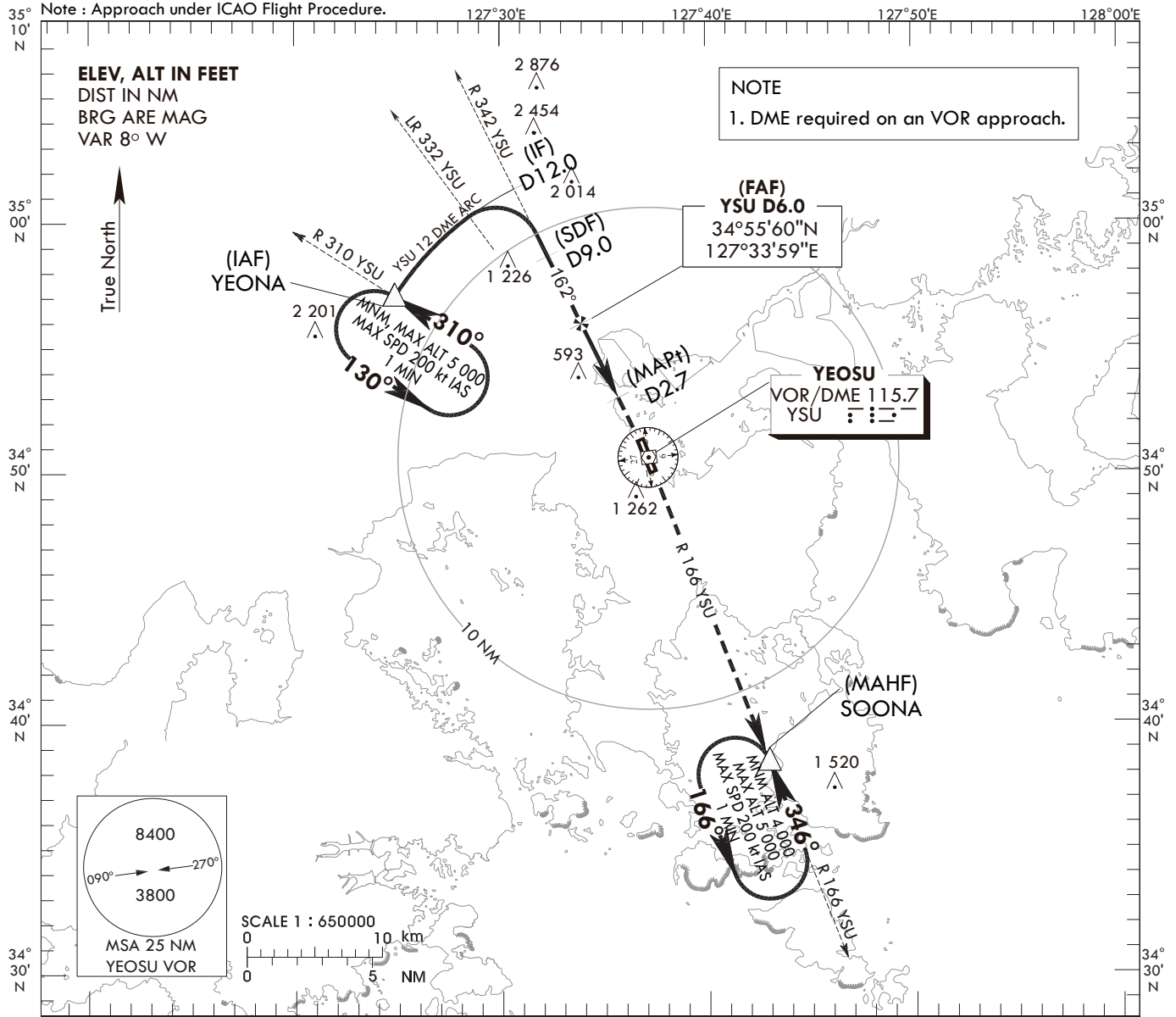
**INSTRUMENT APPROACH CHART - ICAO**

AERODROME ELEV 53 ft  
HEIGHTS RELATED TO  
THR RWY 17-ELEV 28 ft

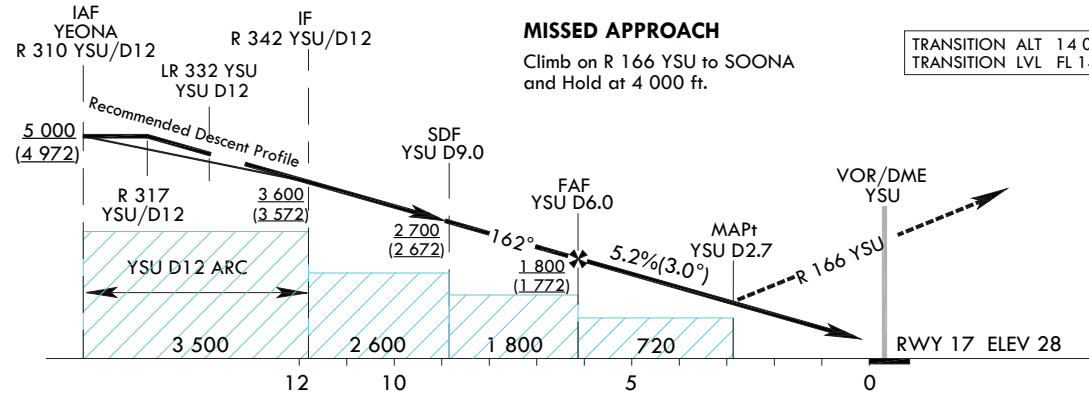
SACHEON	APP	135.4
YEOSU	TWR	122.5
		240.9

**YEOSU/Yeosu (RKJY)**  
**VOR RWY 17**

Note : Approach under ICAO Flight Procedure.



RECOMMENDED PROFILE	DME YSU	5	4	3	2.7
Final Approach Gradient 5.22%, 317 ft/NM	ALT(HGT)	1 483 (1 455)	1 166 (1 138)	849 (821)	760 (732)



TRANSITION ALT 14 000  
TRANSITION LVL FL 140

CATEGORY	DA(DH)/MDA(MDH)	A	B	C	D	Knots					
						60	90	120	150	180	
STA (CG 2.5%)	FULL	900 (872)		3 300 m							
	ALS INOP			4 000 m							
STA (CG 5.0%)	FULL	740 (712)		3 300 m							
	ALS INOP			4 000 m							

\* Timing Not authorized for defining MAPt.  
\* Circling Not authorized.

YEOSU/Yeosu (RKJY)  
 VOR RWY 17

AERONAUTICAL DATA TABULATION

VOR Approach to RWY17 from YEONA			
Fix/point		Coordinates	
YEONA(IAF)	- R 310 YSU/12.00 NM YSU	34°57'03.8"N	127°24'52.1"E
D12 YSU(IF)	- BRG 161.94°/12.00 NM YSU	35°01'24.8"N	127°30'50.3"E
D9 YSU(SDF)	- BRG 161.96°/9.00 NM YSU	34°58'42.2"N	127°32'24.9"E
D6 YSU(FAF)	- BRG 161.97°/6.00 NM YSU	34°55'59.5"N	127°33'59.4"E
D2.7 YSU(MAPt)	- BRG 161.99°/2.70 NM YSU	34°53'00.6"N	127°35'43.3"E
THR RWY 17		34°51'03.73"N	127°36'46.77"E
YSU VOR/DME		34°50'34.2"N	127°37'08.2"E
SOONA	- BRG 165.96°/13.00 NM YSU	34°38'27.5"N	127°42'56.0"E

Change : Amended coordinate format.



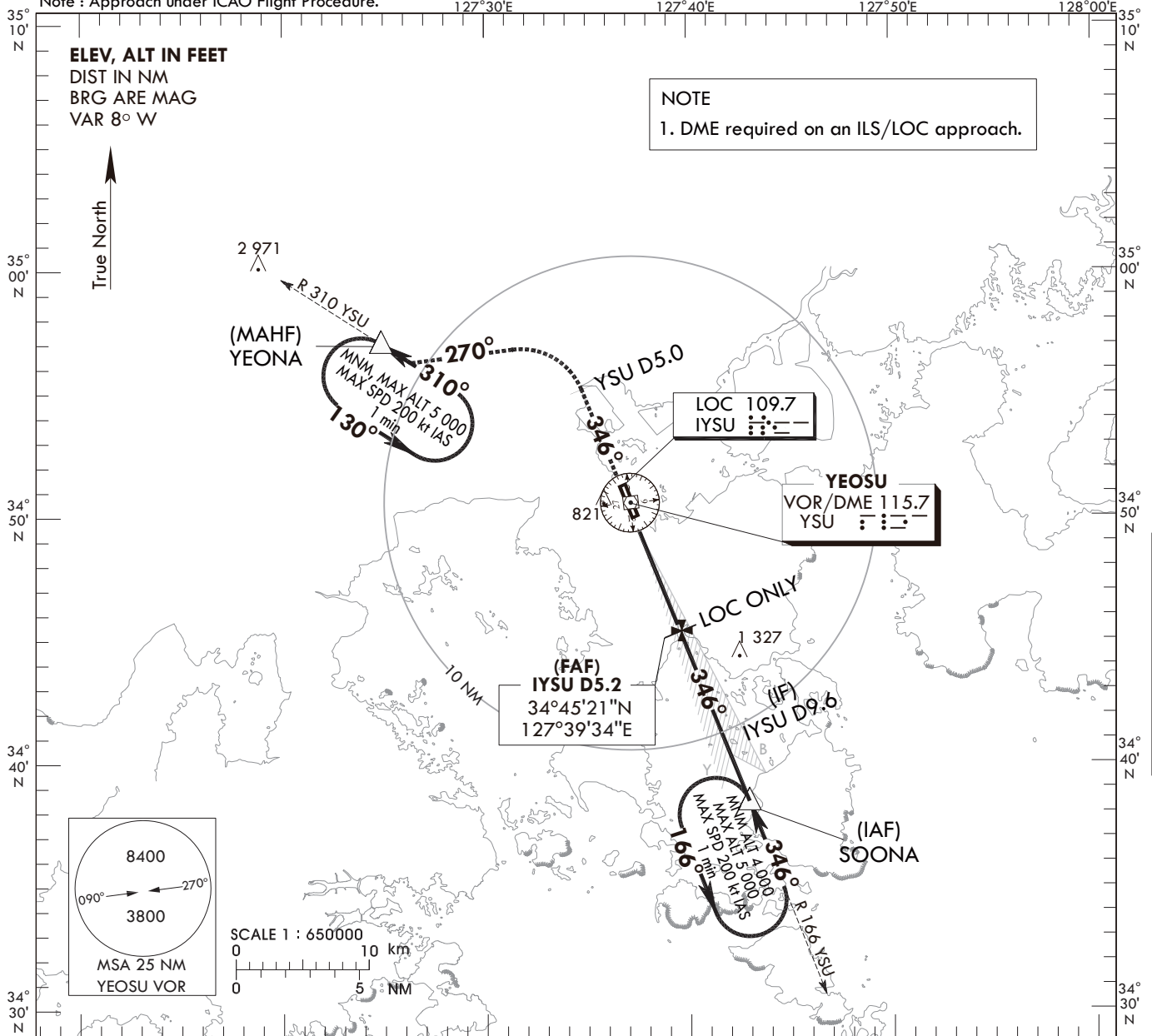
**INSTRUMENT APPROACH CHART - ICAO**

**AERODROME ELEV 53 ft**  
 HEIGHTS RELATED TO  
 THR RWY 35-ELEV 31 ft

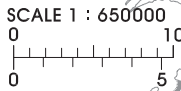
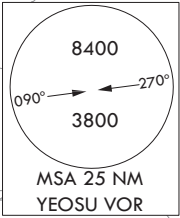
SACHEON APP 135.4  
 YEOSU TWR 122.5  
 240.9

**YEOSU/Yeosu (RKJY)**  
**ILS or LOC Y RWY 35**

Note : Approach under ICAO Flight Procedure.



**NOTE**  
 1. DME required on an ILS/LOC approach.



RECOMMENDED PROFILE(LOC ONLY)		DME IYSU	5	4	3	2.5	127°40'E	127°50'E
Final Approach Gradient 5.31%, 323 ft/NM		ALT(HGT)	1 646 (1 615)	1 323 (1 292)	1 001 (970)	850 (819)	TRANSITION ALT 14 000 TRANSITION LVL FL 140	

MISSED APPROACH		LOC	SDF (LOC ONLY)	FAF (LOC ONLY)	IF	IAF SOONA
Climb straight ahead to YSU 5 DME, Then turn LEFT HDG 270° to intercept and Climb on R 310 YSU to YEONA and Hold at 5 000 ft.		VOR/DME YSU	IYSU D3.1	IYSU D5.2	IYSU D9.6	R 166 YSU/D13
*When conducting ILS 2.5% and LOC 2.5% missed APCH, missed APCH turn limited to 210 kt IAS maximum.		DME IYSU	MAPt (LOC ONLY) IYSU D2.2	1 030 (999)	3 100 (3 069)	4 000 (3 969)
		ILS RDH 50	GP 3.0°	1 700 (1 669)		
		THR ELEV 31				
						NM FROM THR RWY 35

CATEGORY	DA(DH)/MDA(MDH)	A	B	C	D	Rate of descent					
						Knots	60	90	120	150	180
STA	CAT-1 (CG 2.5%)	FULL	465	1 900 m		V/V fpm	318	478	637	796	955
		ALS INOP	(434)	2 300 m							
	CAT-1 (CG 5.0%)	FULL	234	750 m							
		ALS INOP	(203)	1 200 m							
LOC (CG 2.5%)	FULL	850	3 400 m								
	ALS INOP	(819)	3 800 m								

\* Timing Not authorized for defining MAPt.  
 \* Circling Not authorized.

Change : Amended ILS plan view symbol.

YEOSU/Yeosu (RKJY)  
 ILS or LOC Y RWY 35

AERONAUTICAL DATA TABULATION

ILS/LOC Approach to RWY 35 from SOONA			
Fix/point		Coordinates	
SOONA (IAF)	R 165 YSU /13.00 NM YSU	34°38'27.5"N	127°42'56.0"E
D9.6 IYSU (IF)	BRG 345.61°/9.58 NM IYSU	34°41'14.7"N	127°41'34.5"E
D5.2 IYSU (FAP)	BRG 345.59°/5.17 NM IYSU	34°45'21.2"N	127°39'34.2"E
D3.1 IYSU (SDF LOC ONLY)	BRG 345.59°/3.10 NM IYSU	34°47'16.2"N	127°38'38.0"E
D2.2 IYSU (MAPt LOC ONLY)	BRG 345.59°/2.20 NM IYSU	34°48'06.4"N	127°38'13.5"E
THR RWY 35		34°50'00.53"N	127°37'17.70"E
IYSU DME		34°50'10.5"N	127°37'18.1"E
YSU VOR/DME		34°50'34.2"N	127°37'08.2"E
IYSU LOC		34°51'13.0"N	127°36'42.2"E
D5 YSU	BRG 345.59°/5.00 NM YSU	34°55'10.9"N	127°34'45.7"E
YEONA	BRG 270.30°/12.00 NM YSU	34°57'03.8"N	127°24'52.1"E

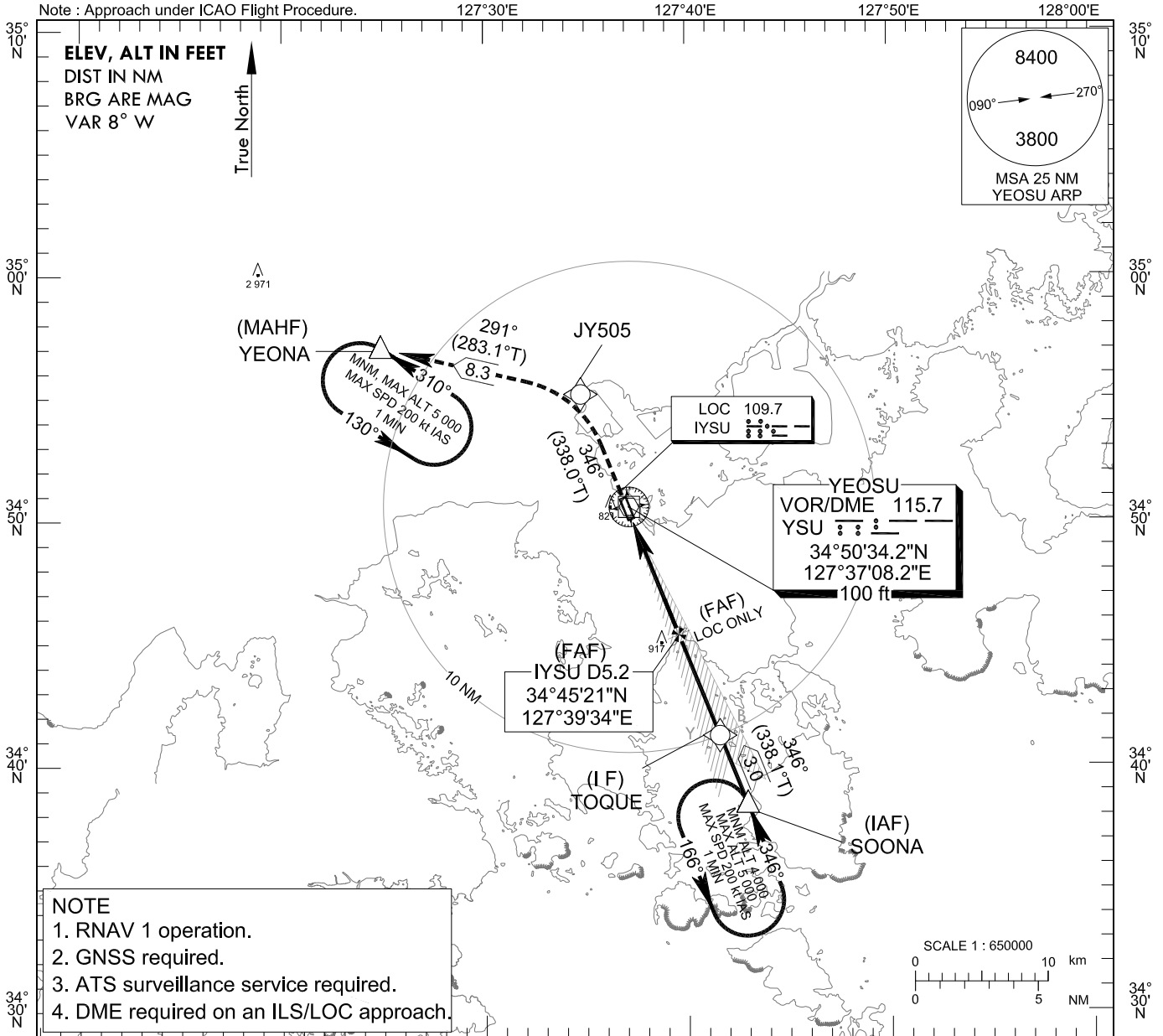
**INSTRUMENT  
APPROACH  
CHART - ICAO**

**AERODROME ELEV 53 ft**  
HEIGHTS REALTED TO  
THR RWY 35 - ELEV 31 ft

SACHEON APP 135.4  
YEOSU TWR 122.5  
240.9

**YEOSU/Yeosu (RKJY)**  
**ILS or LOC Z RWY 35**

Note : Approach under ICAO Flight Procedure.

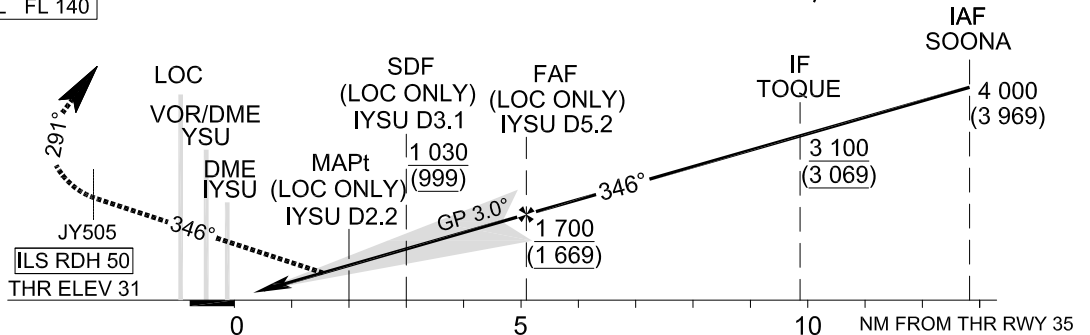


RECOMMENDED PROFILE(LOC ONLY)	DME IYSU	5	4	3	2.5
Final Approach Gradient 5.31%, 323 ft/NM	ALT(HGT)	1 646 (1 615)	1 323 (1 292)	1 001 (970)	850 (819)

TRANSITION ALT 14 000  
TRANSITION LVL FL 140

**MISSED APPROACH**

Climb at 5 000 ft on track of 346° to JY505,  
LEFT turn on track of 291 to YEONA, Hold at 5 000 ft.



CATEGORY	DA(DH)/ MDA(MDH)	A				B				C				D						
		Knots		60		90		120		150		180								
STA	CAT-1 (CG 2.5%)	FULL	465		1 900 m		750m		1 200 m		3 400 m		3 800 m		Rate of descent V/V fpm	318	478	637	796	955
		ALS INOP	(434)		2 300 m		1 200 m		3 400 m		3 800 m									
	CAT-1 (CG 5.0%)	FULL	234		750m		1 200 m		3 400 m		3 800 m									
		ALS INOP	(203)		750m		1 200 m		3 400 m		3 800 m									
LOC (CG 2.5%)	FULL	850		3 400 m		3 800 m		3 400 m		3 800 m										
	ALS INOP	(819)		3 400 m		3 800 m		3 400 m		3 800 m										

Change : Amended ILS plan view symbol.

YEOSU/Yeosu (RKJY)  
 ILS or LOC Z RWY 35

AERONAUTICAL DATA TABULATION

ILS/LOC Approach to RWY 35 from SOONA			
Fix/point		Coordinates	
SOONA(IAF)		34°38'27.5"N	127°42'56.0"E
TOQUE(IF)		34°41'14.7"N	127°41'34.5"E
D5.2 IYSU (FAP)	BRG 345.59°/5.17 NM IYSU	34°45'21.2"N	127°39'34.2"E
D3.1 IYSU (SDF LOC ONLY)	BRG 345.59°/3.10 NM IYSU	34°47'16.2"N	127°38'38.0"E
D2.2 IYSU (MAPt LOC ONLY)	BRG 345.59°/2.20 NM IYSU	34°48'06.4"N	127°38'13.5"E
THR RWY 35		34°50'00.53"N	127°37'17.70"E
IYSU DME		34°50'10.5"N	127°37'18.1"E
YSU VOR/DME		34°50'34.2"N	127°37'08.2"E
IYSU LOC		34°51'13.0"N	127°36'42.2"E
JY505		34°55'10.9"N	127°34'45.7"E
YEONA		34°57'03.8"N	127°24'52.1"E

**INSTRUMENT APPROACH CHART - ICAO**

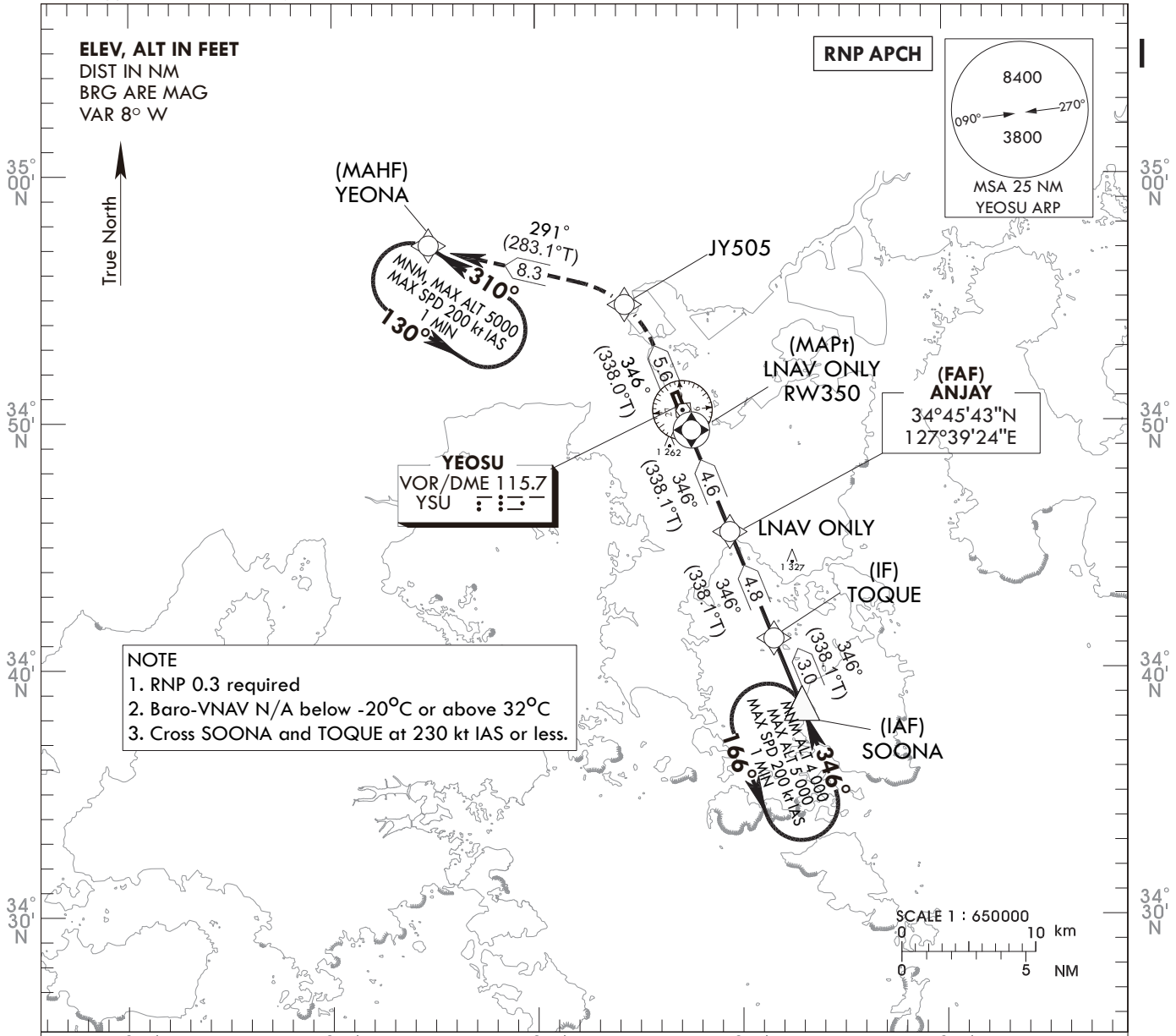
AERODROME ELEV 53 ft  
HEIGHTS RELATED TO  
THR RWY 35-ELEV 31 ft

SACHEON	APP	135.4
YEOSU	TWR	122.5
		240.9

**YEOSU/Yeosu (RKJY)**  
RNP RWY 35

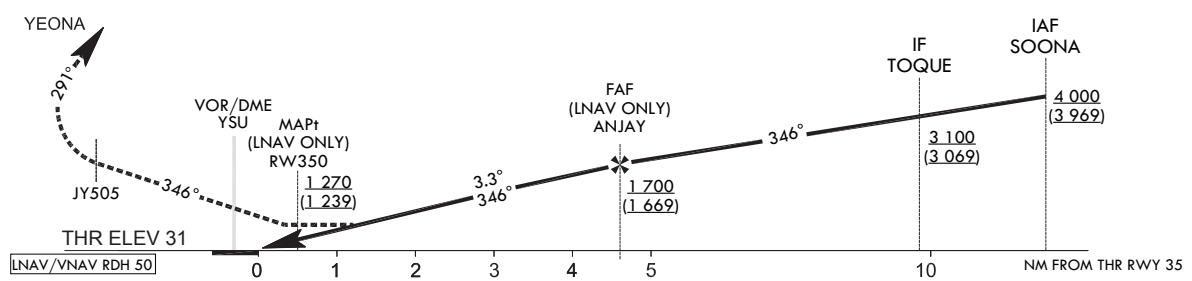
Note : Approach under ICAO Flight Procedure.

127°30'E 127°40'E 127°50'E



**NOTE**  
1. RNP 0.3 required  
2. Baro-VNAV N/A below -20°C or above 32°C  
3. Cross SOONA and TOQUE at 230 kt IAS or less.

**MISSED APPROACH**  
Climb to 5 000 ft on track of 346° to JY505, LEFT turn on track of 291° to YEONA.



CATEGORY	DA(DH)/MDA(MDH)	A	B	C	D	Knots							
						60	90	120	150	180			
STA	LNNAV/VNAV	FULL	1 070	4 400 m			Rate of descent	V/V fpm	350	525	700	875	1 050
		ALS INOP	(1 039)	4 900 m									
	LNNAV	FULL	1 270	5 000 m			* Timing Not authorized for defining MAPt. * Circling Not authorized.						
		ALS INOP	(1 239)	5 000 m									

Change : Amended procedure name(RNNAV(GNSS) → RNP).

YEOSU/Yeosu (RKJY)  
RNP RWY 35  
HOLDING PROCEDURE

AERONAUTICAL DATA TABULATION

Instrument Approach Procedure Coding Tables

RNP RWY 35

Serial Number	Path Descriptor	Waypoint Identifier	Fly-over	Course/Track °M(°T)	Distance (NM)	Turn direction	Altitude (ft)	Speed (kt)	Coordinates	VPA/RDH	Navigation specification	Remarks
001	IF	SOONA	-	-	-	-	+4 000	-230	34°38'27.5"N 127°42'56.0"E	-	RNP APCH	IAF
002	TF	TOQUE	-	346(338.1)	3.0	-	+3 100	-230	34°41'14.7"N 127°41'34.5"E	-	RNP APCH	IF
003	TF	ANJAY	-	346(338.1)	4.8	-	+1 700	-	34°45'42.7"N 127°39'23.7"E	-	RNP APCH	FAF
004	TF	RW350	Y	346(338.1)	4.6	-	+1 270	-	34°50'00.53"N 127°37'17.70"E	-3.30/50	RNP APCH	MAPt
005	TF	JY505	-	346(338.0)	5.6	-	-	-	34°55'10.9"N 127°34'45.7"E	-	RNP APCH	-
006	TF	YEONA	Y	291(283.1)	8.3	-	-	-	34°57'03.8"N 127°24'52.1"E	-	RNP APCH	-
007	HM	YEONA	Y	310(302.8)	-	L	@5 000	-200	34°57'03.8"N 127°24'52.1"E	-	RNP APCH	1 min (Outbound timing)

HOLDING PROCEDURE

Holding Identification	Path Descriptor	Waypoint Identifier	Fly-over	Course/Track °M(°T)	Time (min)	Turn direction	Altitude (ft)	Speed (kt)	Coordinates	VPA/RDH	Navigation specification	Remarks
RNP RWY 35	HM	SOONA	Y	346(338.5)	1	L	-4 000 +5 000	-200	34°38'27.5"N 127°42'56.0"E	-	RNAV 1	-

Change : Amended procedure name (RNAV(GNSS) → RNP).

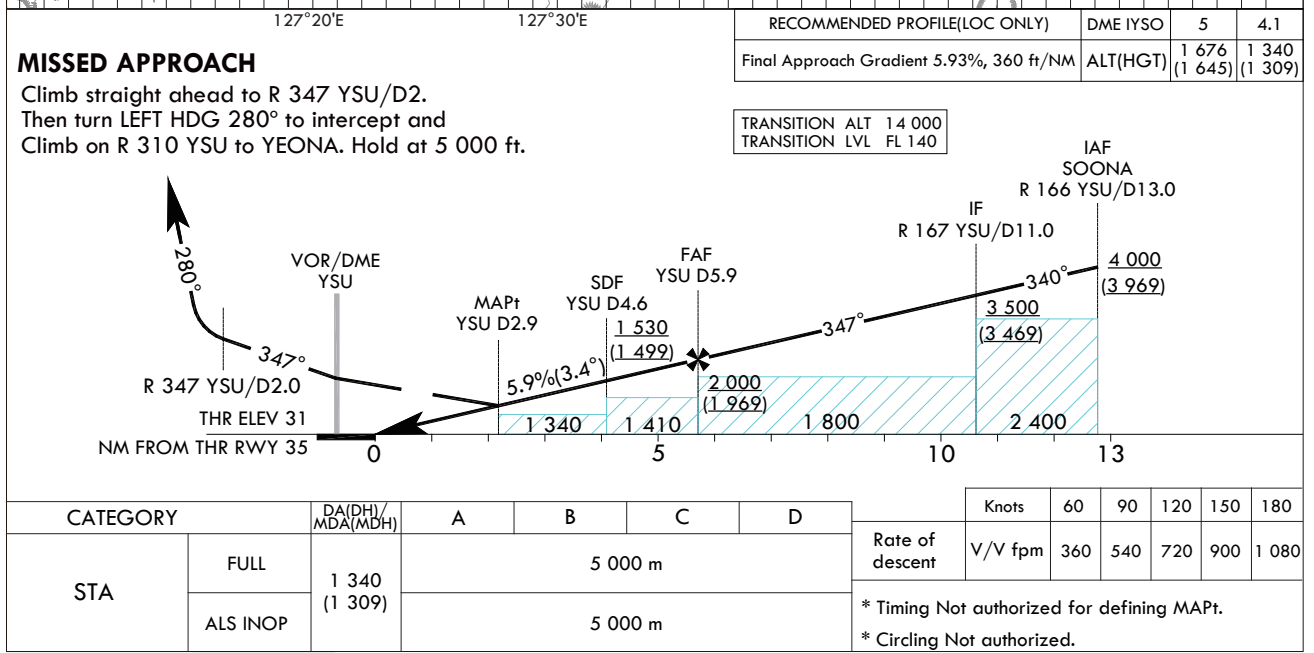
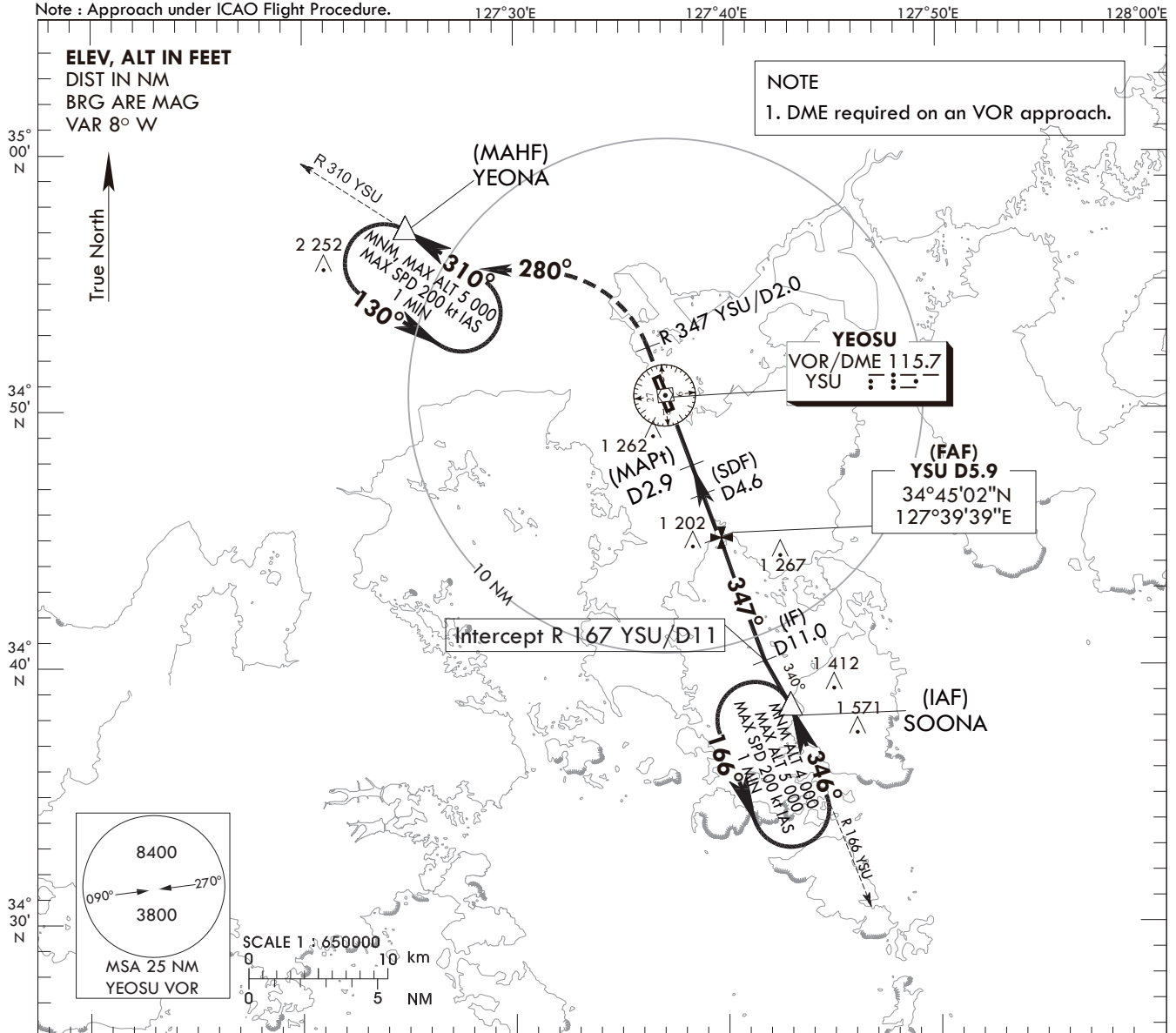
**INSTRUMENT APPROACH CHART - ICAO**

AERODROME ELEV 53 ft  
HEIGHTS RELATED TO THR RWY 35-ELEV 31 ft

SACHEON	APP	135.4
YEOSU	TWR	122.5
		240.9

**YEOSU/Yeosu (RKJY)**  
VOR RWY 35

Note : Approach under ICAO Flight Procedure.



YEOSU/Yeosu (RKJY)  
 VOR RWY 35

AERONAUTICAL DATA TABULATION

VOR Approach to RWY35 from SOONA			
Fix/point		Coordinates	
SOONA(IAF)	- YSU R 165 /13.00 NM YSU	34°38'27.5"N	127°42'56.0"E
D11 YSU (IF)	- BRG 347.04°/11.00 NM YSU	34°40'15.1"N	127°41'49.0"E
D5.9 YSU (FAF)	- BRG 347.02°/5.90 NM YSU	34°45'02.2"N	127°39'38.9"E
D4.6 YSU (SDF)	- BRG 347.01°/4.60 NM YSU	34°46'15.4"N	127°39'05.8"E
D2.9 YSU (MAPt)	- BRG 347.01°/2.90 NM YSU	34°47'51.0"N	127°38'22.3"E
THR RWY 35		34°50'00.53"N	127°37'17.70"E
YSU VOR /DME		34°50'34.2"N	127°37'08.2"E
D2 YSU	- BRG 347.00°/2.00 NM YSU	34°52'26.8"N	127°36'17.0"E
YEONA	- BRG 278.30°/12.00 NM YSU	34°57'03.8"N	127°24'52.1"E

Change : Amended coordinate format.